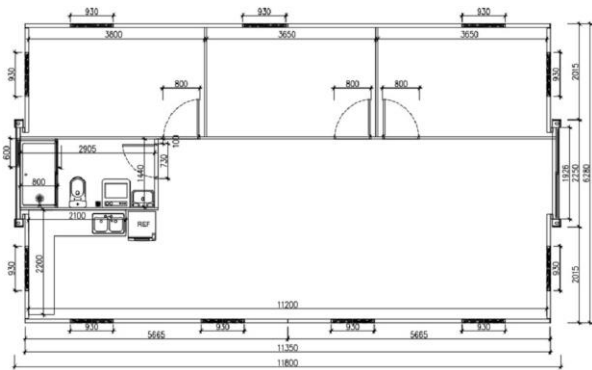






BDI WEAR PARTS
Premium Crusher Wear Parts

BDI Wear Parts

Quotation Of 40 Feet Expandable Container House Plus Edition



No	Name	Specification	House show	Picture
Size		11800mm*2250mm*2530mm (L*W*H) ,this size is packing size for shipping 11800mm*6360mm*2530mm(L*W*H),this size is expandable size. 12800mm*6360mm*2530mm(L*W*H),this size is after installing size		
1	Floor	1.First Layer : 15mm MGO/BULU Board ; 2.Second layer : 1.6mm PVC floor. Color Choose:106/270-8 Expand middle position gaps aluminum cover part		
2	Roof	1.75mm EPS With Double Side 0.5mm Steel Sandwich panel		
3	wall	2. Central External Roof 3mm Steel Panel 3. Central Internal Roof extra glass wool insulation and bamboo fiberboard cover panel		

4	Door	<p>1.Exterior door (tempered glass) : Broken Bridge Aluminum Frame Sliding glass door with 3 keys and Fly screen 1900mm*2035mm Frame color can choose black or white</p> <p>2.Interior door : Single opened door with 3 keys*3 (700mm*2035mm)</p>
---	------	--



5	Window A (tempered glass)	<p>Broken Bridge Aluminum Frame Sliding Double Layer Windows With Fly Screens. Frame color can choose black or white and prefab in factory. Size:930mm*1100mm. Quantity:12 units</p>
---	---------------------------	---



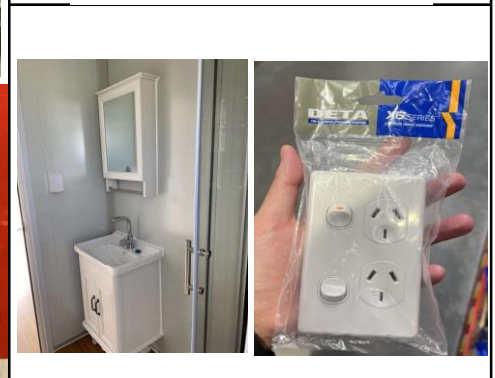
	Window B (tempered glass)	<p>Double Layers Glass Window In Bathroom. Size:600mm*600mm. Quantity: 1 Unit</p>
--	---------------------------	---






6	Electric system (CE/UL/SA A/BS I/BV/CSA standard)	<p>1. One Of Distribution Junction Box ; 2. Ceiling Lights/Switches and sockets.</p>
---	---	--



7	Bathroom	<p>1.*Hand Washbin With Board and Mirror</p> <p>2.*Glass Sliding Showerroom With ABS foundation or tiles shower room need choose</p> <p>3.*Toilet</p>
---	----------	--



8	Plumbing system	AU/US/EU Standard PPR Water Pipes and PVC pipes		
9	Kitchen cupboard	2200x1400 Kitchen cupboard , Quantity:1 unit With Color Choose bench top		

Plus-Edition additional upgrade option If you have any questions, please communicate with sales

10	Roof Extra System	(4100.00CAD) Hot Galvanized Light Steel Structure System With 50mm Ripple EPS Sandwich Panel		
11	Cladding Decoration Panel	(3100.00CAD) 15mm Polyurethane Panel		
12	Bathroom wall decoration panel	(700.00CAD) bamboo fiberboard waterproof panel		
13	Floor remove	(1400.00CAD) Change to 4mm SPC floor Color can choose ask sales brochure		

13	Balcony& Varandahh	<p>(2100.00CAD) 1m Length Balcony Steel Structure With WPC Outside Floor and fence with extra 1m pitch roof</p>		
15	Shipping Details And Photos	 		
16	Manufactu re Time	25 Days		
17	1 Unit Of FOB Toronto	35200.00CAD+Extra Materials Price		